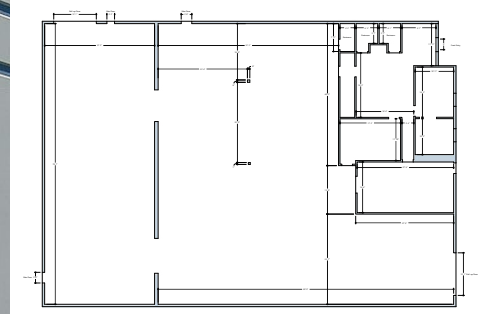
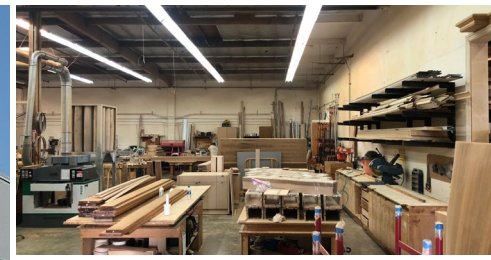


CULTIVATION, MANUFACTURING, DISTRIBUTION & LAB TESTING OPPORTUNITY

FOR SALE

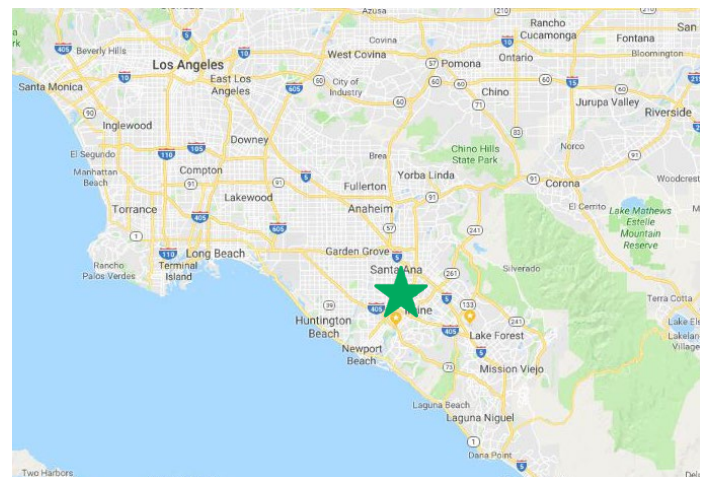
+/- 9,600 Square Feet Located in Santa Ana



3411 Maywood Avenue | Santa Ana, CA 92704

Property Highlights

- Price: **\$3,600,000**
- +/- 9,600 Square Feet
- Cultivation, Distribution, Manufacturing & Lab Testing Eligible Location
- Built in 1976
- Private Fenced Yard
- Construction Type: Concrete Tilt-up
- Parking: 10 Spaces
- Power: 400amp / 3-phase
- Two (2) Roll-up Doors
- Ceiling Height: 16' Clear



We will cooperate with Buyer's Broker.

For More Information Contact:

Christopher Bowen

(310) 894-0048

info@CannEdge.com

BRE License No. 02056994

cannEDGE.com
California Cultivation & Dispensary Opportunities